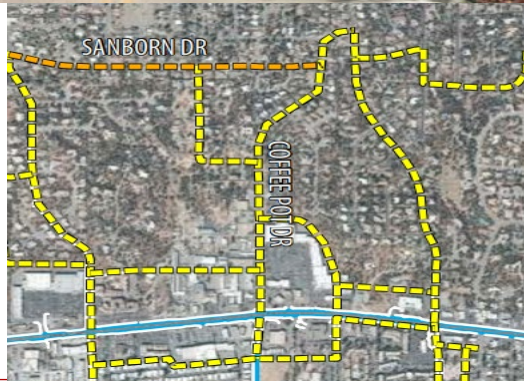
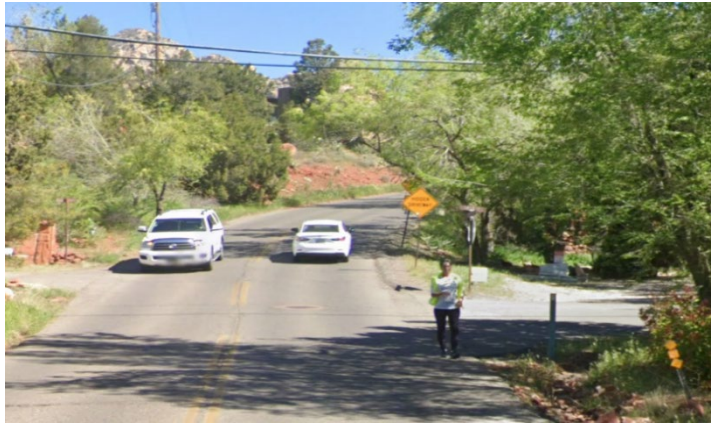




City of Sedona
Public Works Department
 102 Roadrunner Drive Sedona, AZ 86336
 (928) 204-7111 • Fax: (928) 282-5348

Sedona in Motion 11T – Coffee Pot Shared-Use Path

FY25 CIP UPDATE



KEY FEATURES:

Consultant: Paradigm Design

Contractor: TBD

Construction Challenges: Narrow corridor, drainage, driveways, utility conflicts, work within city right-of-way

Project Manager:

Sandra Phillips, CFM PE
 (928) 203-5076

SPhillips@SedonaAZ.gov

City Engineer:

Kurt Harris, PE
 (928) 203-5059

kharris@SedonaAZ.gov

\$ FY25 Project Budget: \$100,000

This is a part of the ST&PS system and recommended in the updated Trails and Pathways Master Plan. Completing this segment would provide a safe multimodal facility for Coffee Pot Road. This is an area that experiences high volumes of pedestrian and bicycle use due to the proximity to grocery stores, pharmacies, transit stops, trailheads, and other attractions.

As part of the Sedona Trails & Pathways System (ST&PS), the City of Sedona built Thunder Mountain Rd SUP in 2022. Now, the city will begin the feasibility phase on this pathway with an engineer yet to be awarded the design contract. It is anticipated that the pathway will extend from Sanborn to 89A.

The shared-use path will likely be constructed with concrete due to utilities and drainage. This project will allow safer pedestrian access along Coffee Pot Road and will continue to make Sedona a more walkable and bikeable community.

This 10' path is expected to be on the east side of Coffee Pot Dr between W SR89A and Grasshopper Lane. There, a new speed table will be constructed, and the pathway will cross the street and the path will continue on the west side until Sanborn Dr. The path will also be extended from Sanborn Dr to Mountain Shadows Dr.

PROJECT STATUS

MAY FY25

Project Phase	% Completion	Completion Date
Design	30%	FALL 2025
Construction	0%	WINTER 2025